

Cynomolgus PDL1 Protein; His Tag

Product Information

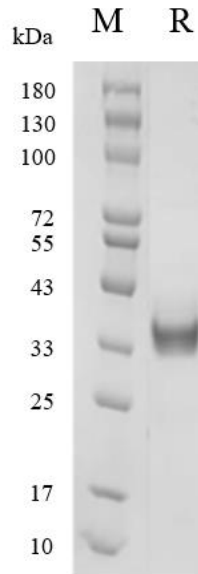
Product Name	Cynomolgus PDL1 Protein; His Tag
Storage temp.	Store at $\leq -70^{\circ}\text{C}$, stable for 6 months after receipt. Recommend to aliquot the protein into smaller quantities for optimal storage. Please minimize freeze-thaw cycles.
Catalog# / Size	GM-85611RP-100 / 100 μg GM-85611RP-1000 / 1 mg

Protein Information

Alternative Names	PD-L1,CD274,B7-H1,PDCD1L1,PDCD1LG1
Source	Cynomolgus PDL1 Protein; His Tag (GM-85611RP) is expressed from human 293 cells (HEK-293). It contains AA Phe 19 - Arg 238 (Accession # G7PSE7-1). This protein carries a His tag at the C-terminus.
Purity	> 95% as determined by SDS-PAGE
Endotoxin	< 1 EU/ μg , determined by LAL gel clotting assay
Predicted Mol Mass	24.9 KDa
Formulation	Supplied as a 0.2 μm filtered solution of PBS, pH7.4.
Description	<p>PDL1, also known as programmed death-ligand 1, is a protein that is expressed on the surface of certain cells, including cancer cells and immune cells. It plays a key role in regulating the immune response by binding to its receptor, PD1, on T cells and inhibiting their activity. This interaction can suppress the immune system's ability to recognize and attack cancer cells, allowing tumors to evade destruction.</p> <p>PDL1 has become an important target for cancer immunotherapy, as blocking the interaction between PDL1 and PD1 can help to unleash the immune system's ability to recognize and destroy cancer cells. Drugs that target PDL1 or PD1, known as checkpoint inhibitors, have shown promising results in treating various types of cancer, including melanoma, lung cancer, and bladder cancer.</p> <p>The expression of PDL1 in tumor cells is also used as a biomarker to predict the response to checkpoint inhibitor therapy. Patients with high levels of PDL1 expression in their tumors may be more likely to benefit from treatment with checkpoint inhibitors. As a result, PDL1 testing has become an important part of the decision-making process for cancer treatment.</p>

Version:3.3 Revision Date:25/12/2023

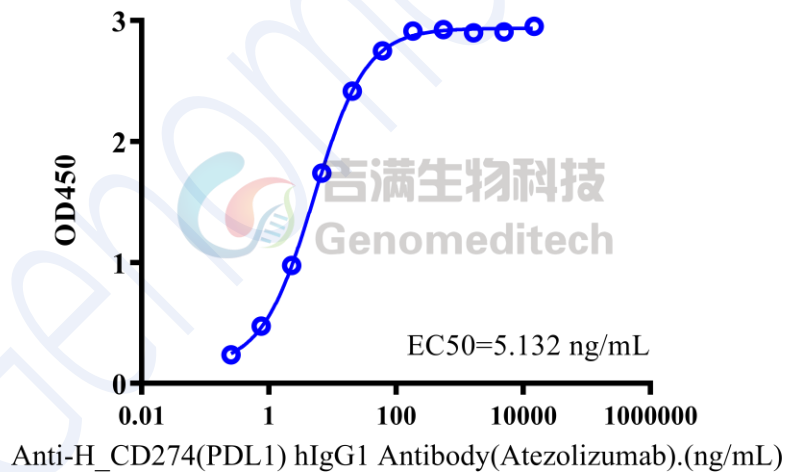
SDS-PAGE



On SDS-PAGE under reducing (R) condition. The gel was stained overnight with Coomassie Blue. The purity of the protein is greater than 95%.

Bioactivity-ELISA

Cynomolgus PDL1 Protein; His Tag, ELISA
0.6 μg Anti-His mIgG2a Antibody+0.1 μg Cynomolgus PDL1 Protein; His Tag of per well



Cynomolgus PDL1 Protein; His Tag (Catalog # GM-85611RP) was immobilized at 1 $\mu\text{g}/\text{ml}$ (100 $\mu\text{L}/\text{well}$) on Anti-His mIgG2a Antibody (Catalog # GM-59493AB) (0.6 $\mu\text{g}/\text{well}$) precoated. Increasing concentrations of Anti-H_CD274(PDL1) hIgG1 Antibody (Atezolizumab) (Catalog # GM-31740AB) were added.